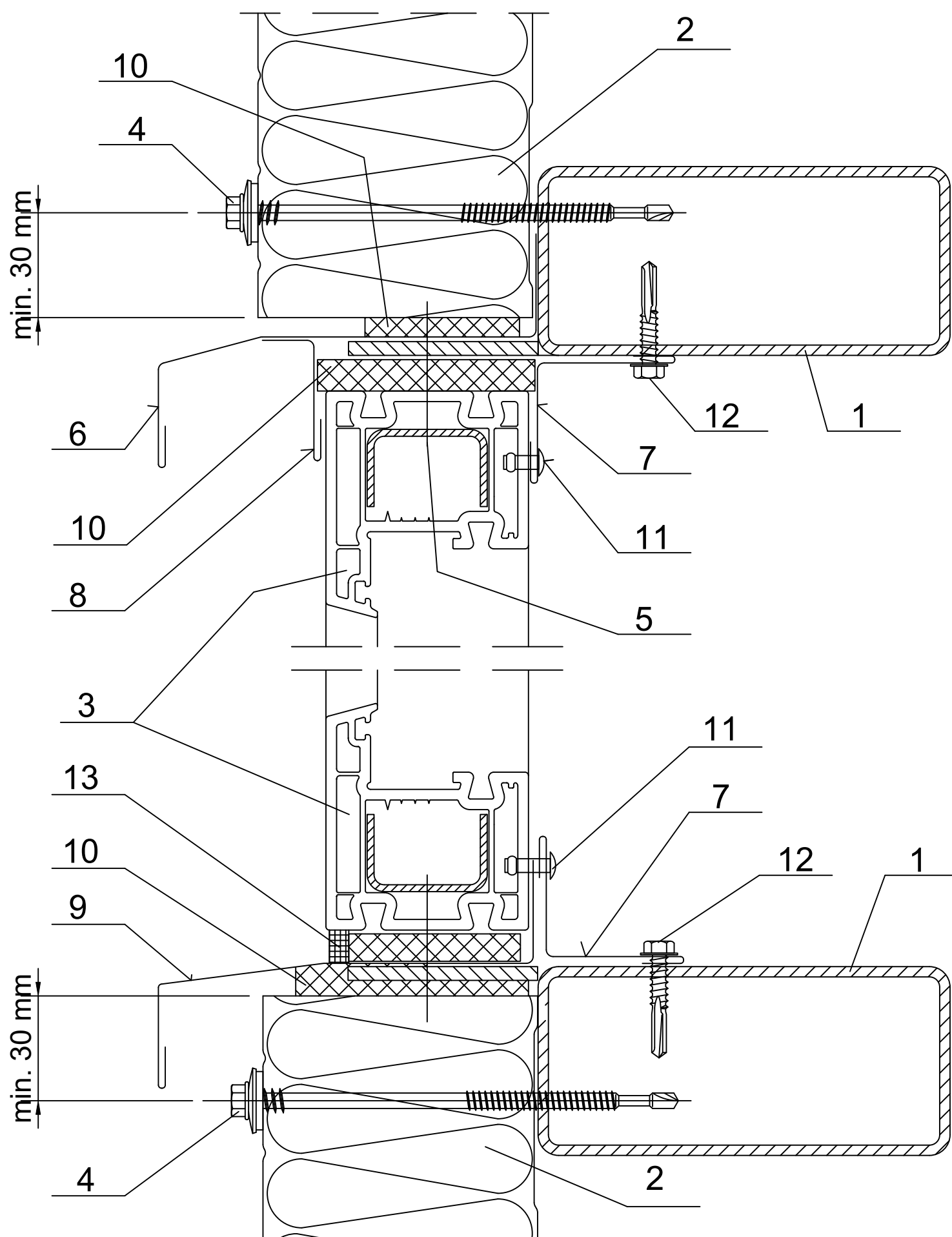


Data	Data zmiany	Oznaczenie szczegółu	Nr rysunku	Zmiana
Opracował Ruukki	Zmiana	M30/S30	-	
Skala 1:2	Obiekt		Nr pliku P2001/003-00040	



- | | |
|---|--|
| 1. Steel sheeting rail acc. to engineering design of the structure | 8. Custom ordered flashing |
| 2. Ruukki SP2D PIR. | 9. Custom ordered drip |
| 3. PCV window | 10. Impregnated polyurethane sealant or expanding foam |
| 4. Panel fastener for hot-rolled sheeting rail or for cold-bent sheeting rail | 11. Steel rivet Al/Fe (every 300 mm) |
| 5. Tap screw for fixing windows (every 500 mm) | 12. Tap screw for metal sheet |
| 6. EA1B01 plinth flashing | 13. Permanently elastic sealing compound |
| 7. Custom ordered flashing. | |